

Dana Adobe Cultural Center Activity Sheets

During these stressful times, I know a lot has changed and most of us feel discombobulated. I hope these activities bring happiness and new knowledge to each of you.

For more information about booking private

Adobe tours or field trips please contact

Krissy@danaadobe.org



Welcome to the DANA ADOBE CULTURAL CENTER



Wm. C. Dana.

From Captain to Don

Born in Boston, Massachusetts on May 5th, 1797, William Goodwin Dana, later known as Guillermo Dana, was orphaned at age of 9 and grew up to become a ship's captain. He traveled the world, from China, India, Alaska, and the Sandwich Islands (now known as Hawaii). In the 1820s, attracted by the sea otter trade and the beautiful land Dana decided to set up a permanent residence in Santa Barbara, California.

At this time, California was part of Mexico. Captain Dana worked with Carlos A. Carrillo and met his daughter, Maria Josefa Carrillo. In order to marry and later acquire land, he needed to do four things: 1) become a naturalized Mexican citizen, 2) learn to speak Spanish, 3) convert to Catholicism, and 4) ask permission from California's governor to marry. Finally, the couple married in 1828. They had 21 children together, with 13 living to adulthood.



Maria Josefa Carrillo

After his naturalization in 1835, Dana applied for and received his Mexican land grant of 37,888 acres in 1837. Dana's rancho was known as the Rancho Nipomo. To move his family to the rancho, he designed and built a 13-room adobe home, the Dana Adobe, from 1839 to 1850.

Rancho Period

Rancho Nipomo is an authentic example of the blending of Mexican, Spanish, indigenous, and Euro-American influences into what became known as the California culture.

Casa de Dana was the only stopping point between Missions San Luis Obispo and Santa Inez along the historic El Camino Real.



It would later become the exchange point for the first regular mail route between San Diego and San Francisco, a polling place for the election of delegates to the California Constitutional Convention, a stagecoach stop, and in the early 1880's the Pacific Coast Railway was built across the rancho.

The Casa de Dana was known far and wide as a hospitable stop for weary travelers. The Dana family would provide a place to rest, food, horses, and coins, if needed, to those making their way up and down the coast.

In 1837, Mexico awarded a 37,388 acre land grant to Captain William Dana and Maria Josefa Carrillo de Dana, also known today as Nipomo, the Rancho Nipomo Dana Adobe.

On the Rancho

The chief source of income for the early years was raising cattle to trade their hides and tallow. The sale of cattle for their meat was particularly booming later during California Gold Rush. After cattle prices fell, sheep were raised on the property, and later sections were dry farmed.

The rancho was also famous for its finely woven serapes and cloth. The rancho needed to be highly self-sufficient, and over the years, it had a blacksmith shop, a soap making shop, a furniture making shop, and a small store where the family would sell items made on the rancho or traded with ships along the nearby coast. The rancho survived the passing of Captain Dana in 1858. Mrs. Dana divided Rancho Nipomo among their children in 1882.

Today...

The Dana Adobe Nipomo Amigos (DANA) came together to form a non-profit organization in 1999. The goal was to secure funds necessary for the restoration and protection of the deteriorating Dana Adobe. What started as a small, single-focused organization has now grown to over **400 members** and an enlarged vision. The Dana Adobe is now a California Historic Landmark, on the National Register of Historic Places and a Save America's Treasures site. In 2015, DANA received a Governor's Historic Preservation Award.



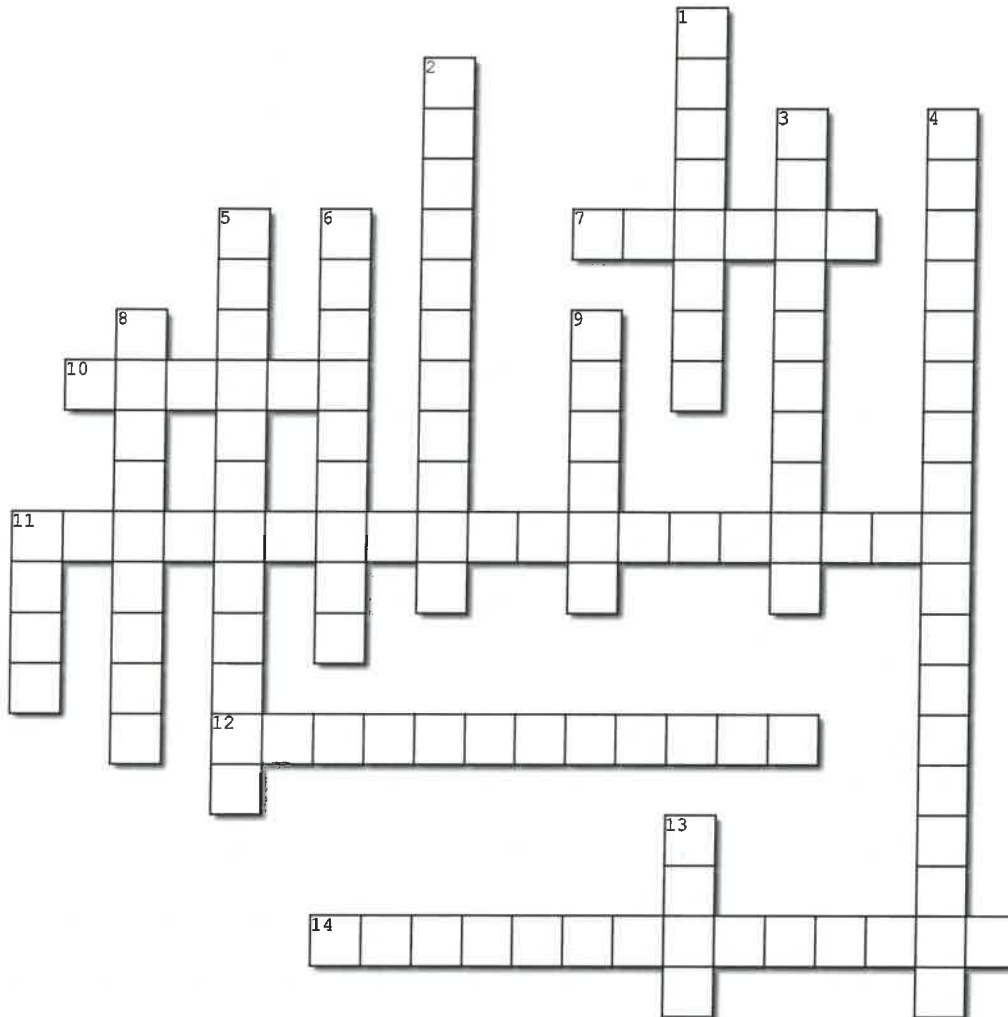
Now, on 130 acres the DANA Adobe Cultural Center offers its visitors a historic park, museum, a nature center, interpretive trails, and a way to step back into time to enhance the knowledge and understanding of the California Rancho era, its people, culture, and ecosystems through time.



Name: _____

Dana Adobe

Read the handout and complete the crossword puzzle below



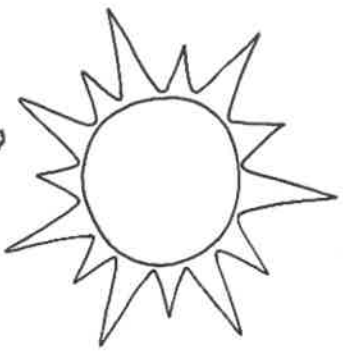
Created using the Crossword Maker on TheTeachersCorner.net

Across

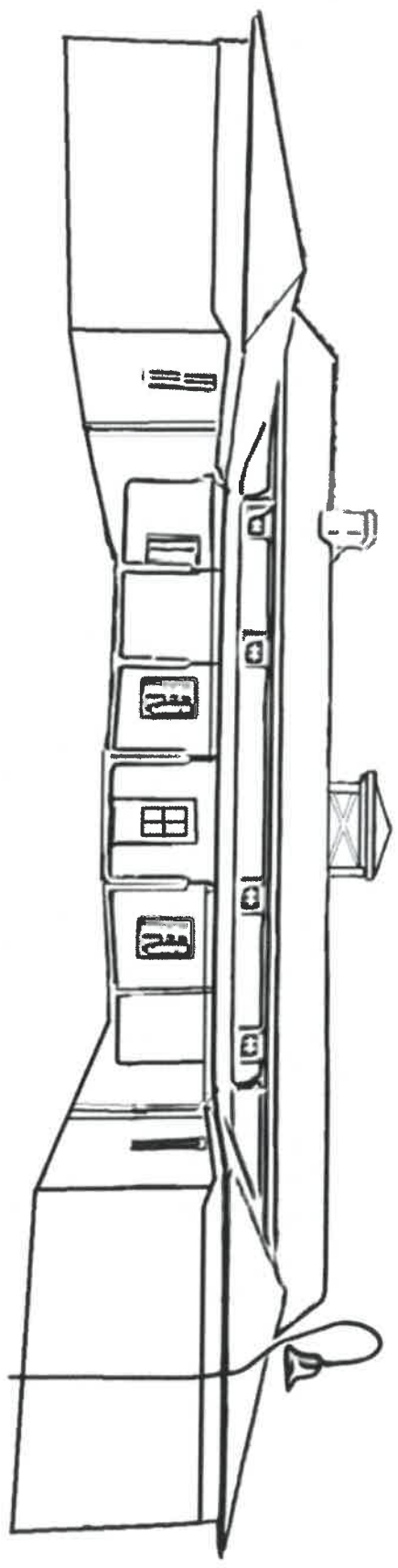
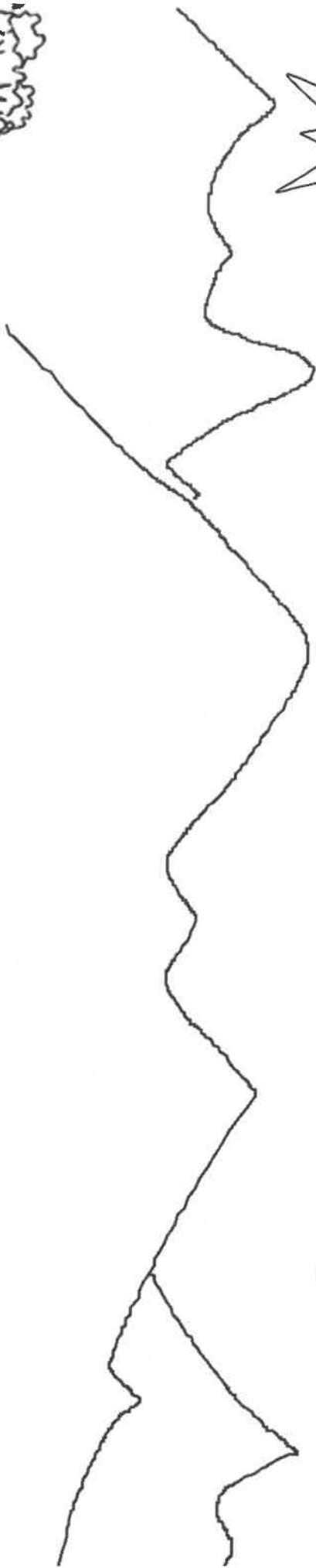
- 7. Chief source of income
- 10. City that Captain Dana was born
- 11. Mrs. Dana maiden name (3 words)
- 12. Name of the Mexican land grant of 37,888 acres granted to the Dana Family
- 14. Original settlers of Nipomo who have lived here over 9,000 years (2 words)

Down

- 1. Number of children that lived to adulthood
- 2. The number of DANA members (2 words)
- 3. Blending Mexican, Spanish, Indigenous & Euro-American influences became what culture
- 4. Captain's full name (3 words)
- 5. The place where Captain and his wife met (2 words)
- 6. The number of children Captain and his wife had (2 words)
- 8. The Dana Adobe Nipomo Amigos (DANA) is what type of organization
- 9. In the 1820's California was apart of
- 11. Casa de Dana was the first exchange point for what route
- 13. Captain Dana was a captain of a what



Dana Adobe



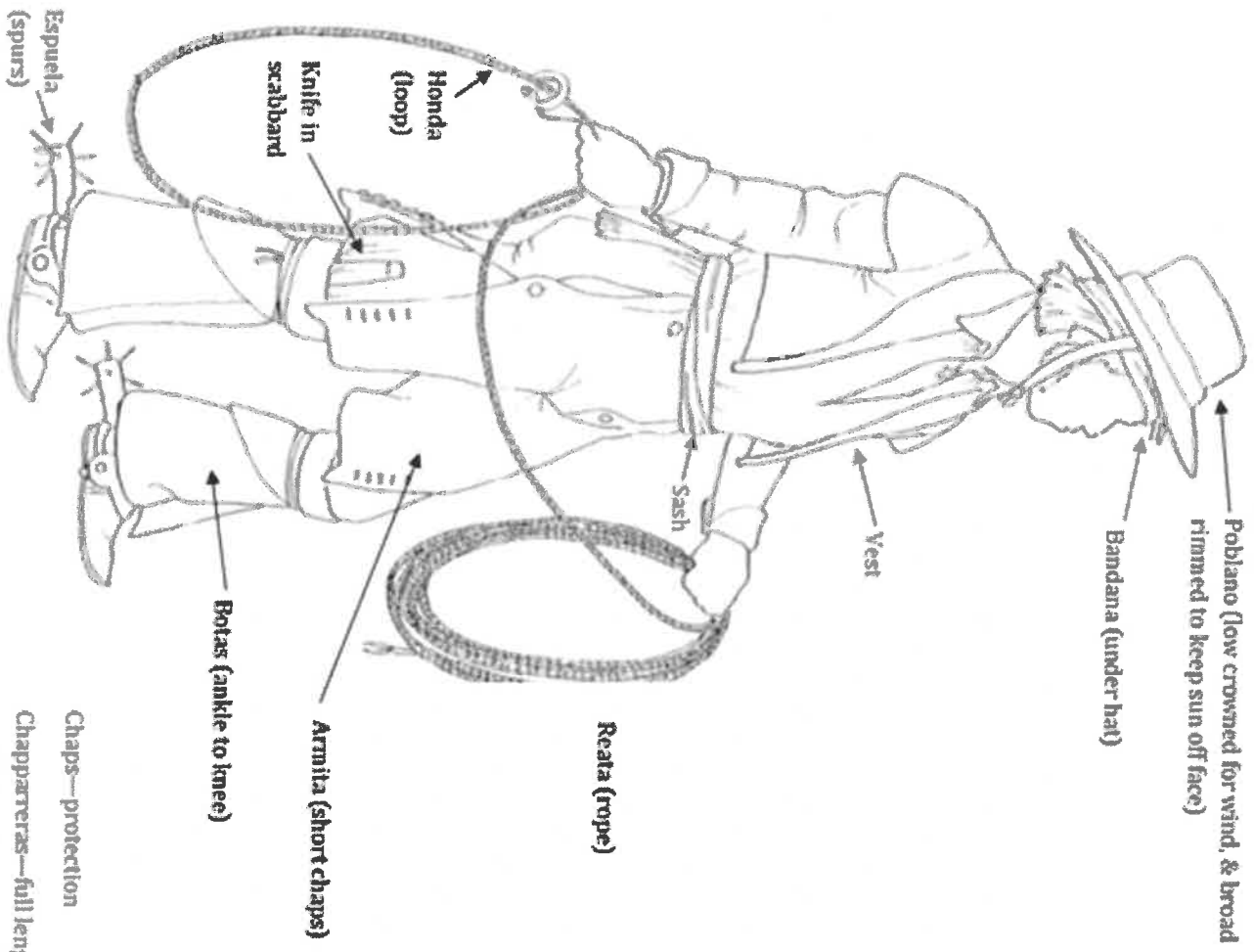
In 1837 Dana received a 37,887 acre Mexican land grant in Nipomo. He designed and built the Dana Adobe. In 1839 the Dana family moved from Santa Barbara to their new home.

Dana Adobe Cultural Center

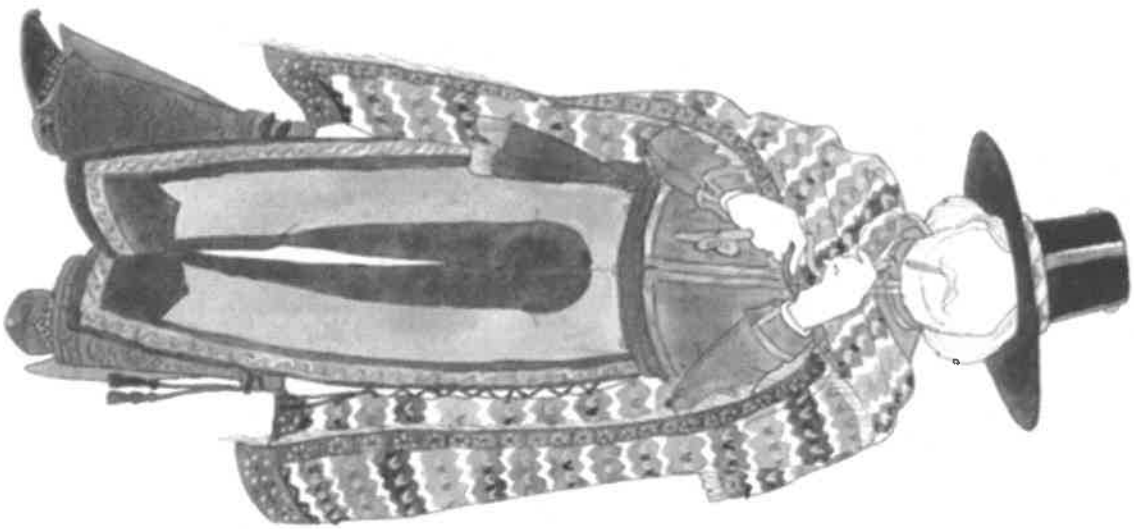
671 S. Oakglen Avenue | Nipomo, California | 93444

California Men

Work and Travel Clothes



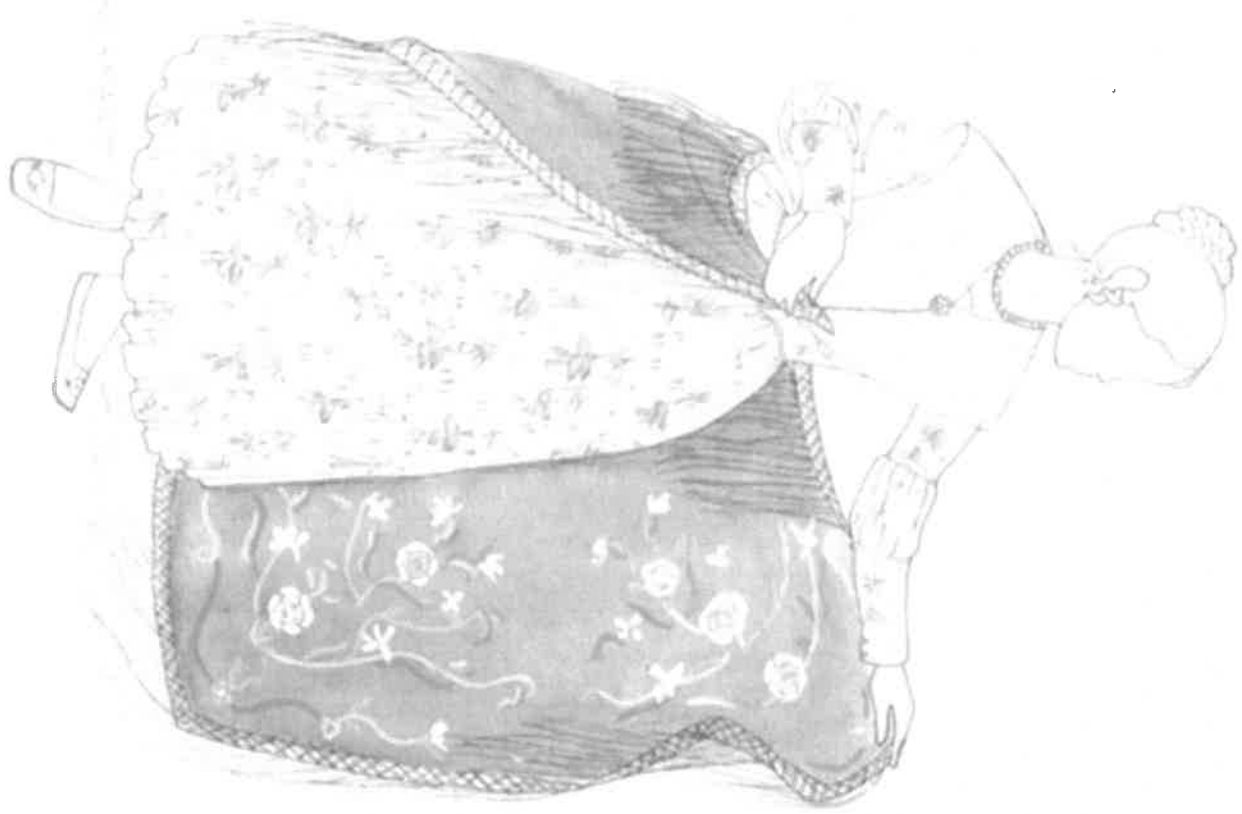
Best Clothes



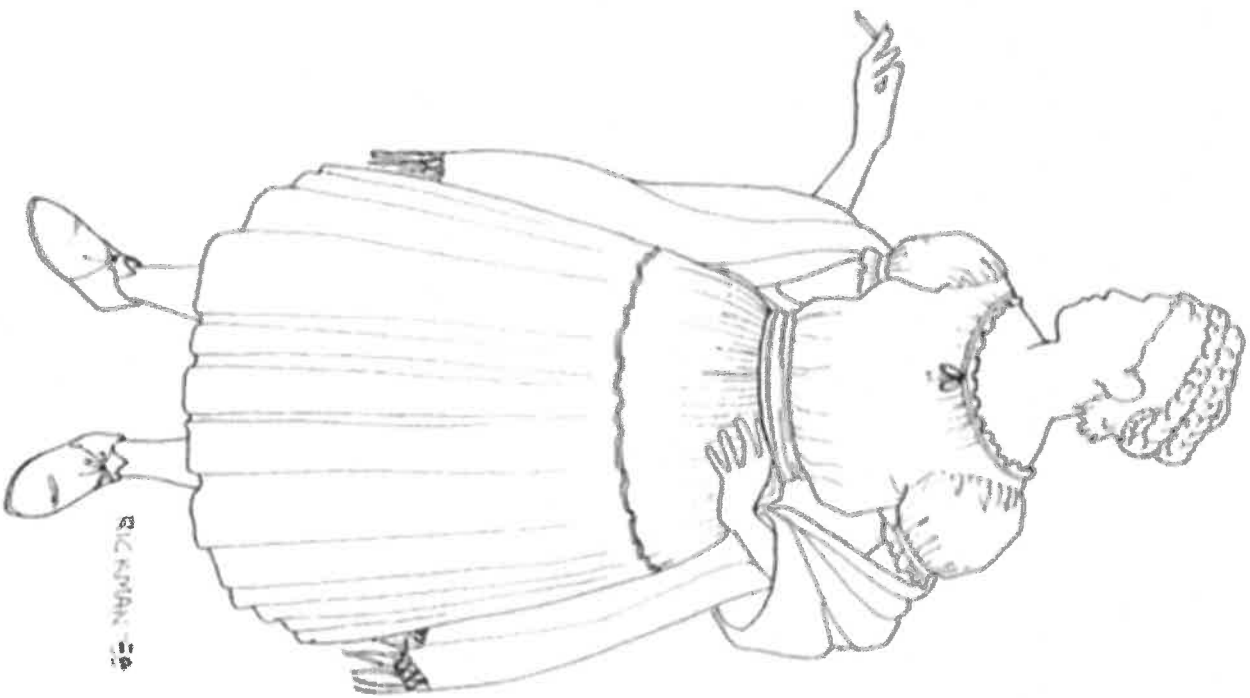
Chaps—protection
 Chapparreras—full length chaps
 Serape—blanket and/or jacket

California Women

Best Clothes



Work and Travel Clothes



BICKNMAN 34

The Rancharo Period (c. 1820-1849) was a short-lived yet significant period in California History. Mexican independence from Spain brought about great social, political, and economic changes. With the secularization of mission land, greater opportunities for rancheros to expand their land holdings became possible. The expansion of private property initiated changes in California's economic development; societal and political changes coincided with the economic changes thus creating the Rancharo identity and time period. The Dana Adobe is a prime example of the expansion and growth of California culture after Mexico gained its independence. It is at the Dana Adobe where Mexican-Spanish influences and white Anglo-Saxon diasporas work together to create California culture. The livelihoods of the Danas show California culture at its finest. During the time of Mexican rule, American settlers, such as William Goodwin Dana, often times became naturalized citizens and immersed themselves into the world of 1840s California and contributed different perspectives into the growth of California culture.

In 1837 Dana received a 37,887 acre Mexican land grant in Nipomo. He designed and built the Dana Adobe. In 1839 the Dana family moved from Santa Barbara to their new home. Captain and Senora Dana had twenty-one children, most of them born in Santa Barbara.



Captain William Dana

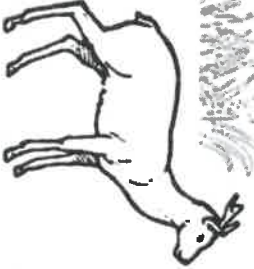
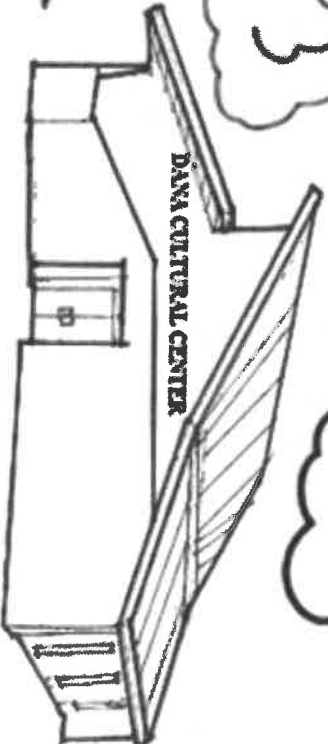
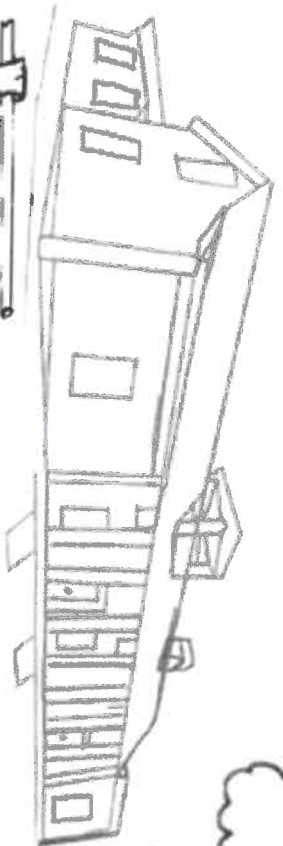
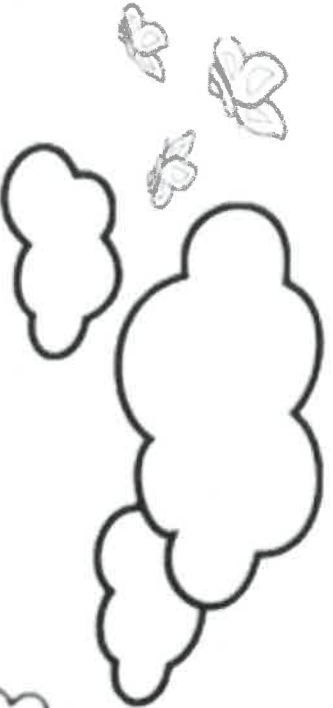
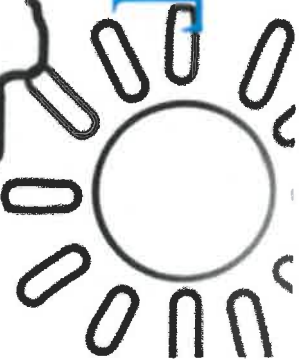


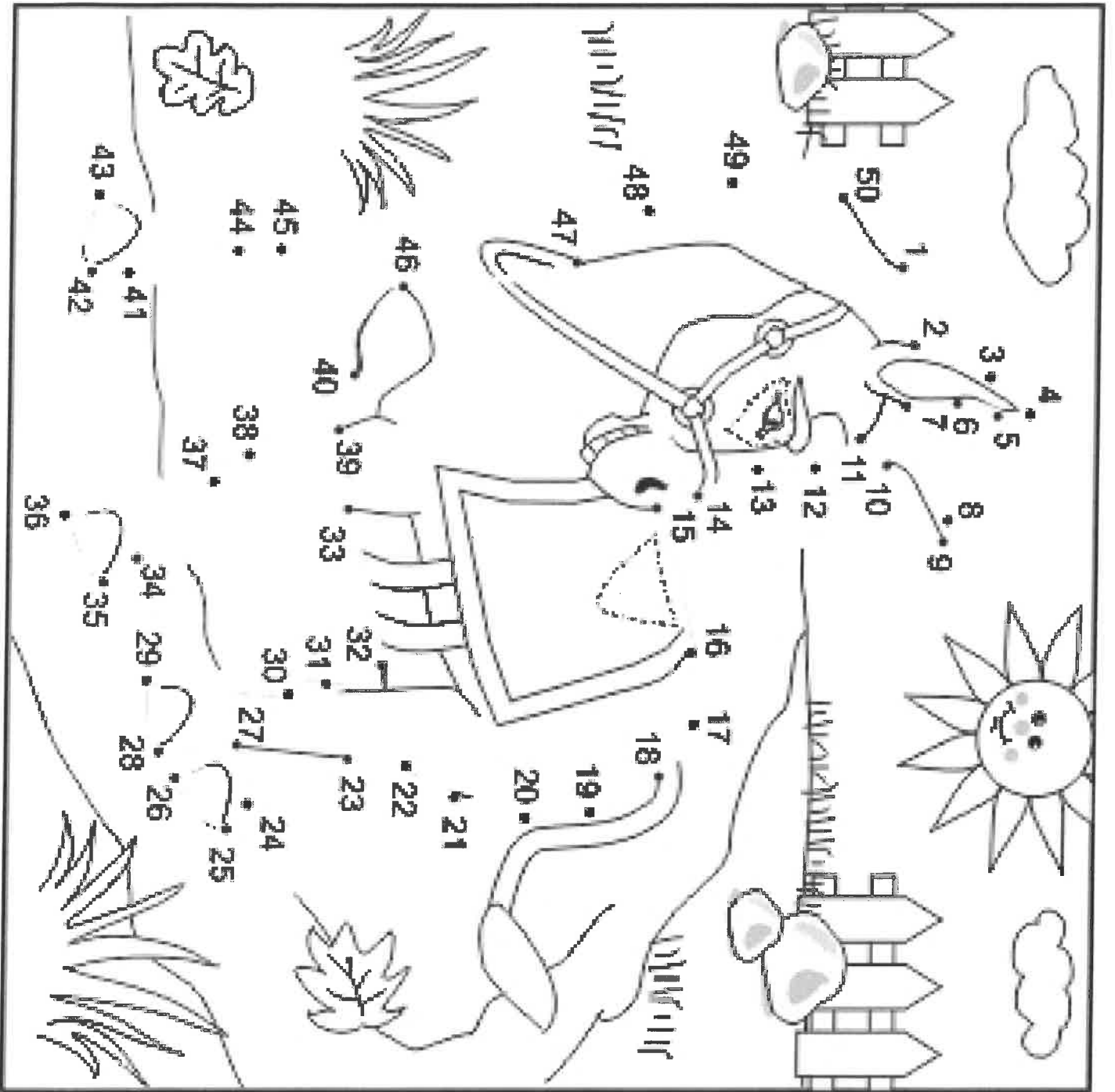
Senora Maria Josefa Dana (Carrillo)



DANNA NATURFEST

2020





Dana Adobe

S P Q O U B L A C K S M I T H G W X N W A O M U B R K E M N
 H A G F Z G Z C V U I P E A Z G Y K A M I O A V Q V N Q O J
 I D S U H H S H V M Z R G U Z T E F J C G R I Z M J Z Y D D
 I O M P M X A U D X A S K Z A N S D B D P C L I Q N A L L J
 F B L X C W S M L H Z K Y F L T N I P O M O H I N D I A N S
 G E R I W U N A A H Z R O B M H C L K N M U I D N O B P O W
 F A M R V T O S H A V G B N P I P U M F W R B E Y R Z A Y B
 A X M Z A U T H G M N C X U Y D O T G A L F E N A O E M J B
 H B O S T O N D A X Y U Y J D E R X G P R A D V O F N M X Y
 G L C E V X T H R L R L K X W S O Z Z E N I C Q P U V E Q N
 A G L Y P N J C M X Z T O X L A S X S L X Y A L R I Y X V S
 R I Z U S H Y M T N F U T U A N W B D C Z I L J H M U I A B
 R R U M U S O T N D S R F C M T W A C A H X I Y O U A C P R
 Z Q L U R P G T X I R A F B W A P F Q M O P F T U S U O U I
 Y X W S H Y N T L X F L U J Z B P X L I R F O R Y F E F L P
 D T T E T W M C Z T V C E S P A A Y B N S C R Z Q D Q F Y W
 T A X U Z W O S I F T E W Z T R O P C O E U N B L K K D A Q
 O L S M P F M N S H R N P H D B N E X R S V I E M T O A Z R
 G L U X C I W I A E I T J M F A K I M E X X O P H A C N K D
 L O R V T V X A O T A E J O K R E I M A L J H A N C D A B Q
 Z W V B B V C S P Q U R C O U A T J H L T R C O R M Z J S H
 T R U W K W I A D O P R U Q Y Q D I E B F K J U M L R U K I
 S E G J X F V M P Y U U E D R R M L S W M W Y F Q W O J B R
 R B D A T B W C G T F O K C L R I C F B C F E E T I G F R L
 A O W L D G R G X S A W W P E M M U Y L D E J W J G P H Y H
 N K J V E Y X B U W M I W X L N N A D Q N P G Y C A T T L E
 C R W I L L I A M Z S D N Y E V T J W N K H U T N H G I I V
 H F D Y S S M Q X O U M F E G V Z E T V Y G J E M L M Z F P
 O Y T D I Q E B G A Z K P S Q W W C R F C Q C A R R I L L O
 M L C Q T V X S P Q B D B B Y U O X T R Z P V C C Z J Q M L

Cultural Center	El Camino Real	Santa Barbara	Nature Center
Blacksmith	Californio	Maria Josefa	Carrillo
Indians	Chumash	William	Captain
Rancho	Museum	Cattle	Boston
Tallow	Mexico	Nipomo	Hides
Horses	Adobe	Mail	Dana